

**Palaeontological Impact Assessment for the  
proposed Cemetery extension at Heroes Acre  
Memorial Park, southeast Pietermaritzburg,  
KwaZulu Natal Province**

**EVP 1541**

**Desktop Study (Phase 1)**

**For**

**EnviroPro Environmental Consulting (Pty) Ltd**

**04 February 2023**

**Prof Marion Bamford**

Palaeobotanist

P Bag 652, WITS 2050

Johannesburg, South Africa

[Marion.bamford@wits.ac.za](mailto:Marion.bamford@wits.ac.za)

## **Expertise of Specialist**

The Palaeontologist Consultant: Prof Marion Bamford  
Qualifications: PhD (Wits Univ, 1990); FRSSAf, mASSAf  
Experience: 34 years research and lecturing in Palaeontology  
26 years PIA studies and over 350 projects completed

## **Declaration of Independence**

This report has been compiled by Professor Marion Bamford, of the University of the Witwatersrand, sub-contracted by EnviroPro Environmental Consulting (Pty) Ltd, South Africa. The views expressed in this report are entirely those of the author and no other interest was displayed during the decision making process for the Project.

Specialist: Prof Marion Bamford

A handwritten signature in blue ink that reads "MK Bamford". The signature is written in a cursive style with a horizontal line underneath.

Signature:

## **Executive Summary**

A Palaeontological Impact Assessment was requested for the proposed development of a Cemetery in Heroes Acre Memorial Park in the southwest of Pietermaritzburg, KwaZulu Natal Province. The applicant is the Msunduzi Local Municipality.

To comply with the regulations of the South African Heritage Resources Agency (SAHRA) in terms of Section 38(8) of the National Heritage Resources Act, 1999 (Act No. 25 of 1999) (NHRA), a desktop Palaeontological Impact Assessment (PIA) was completed for the proposed development.

The proposed site lies on the moderately fossiliferous Pietermaritzburg Formation that might preserve fragmentary fossil plants and trace fossils in the shales although these are rare. Nonetheless, a Fossil Chance Find Protocol should be added to the EMP. Based on this information it is recommended that no further palaeontological impact assessment is required unless fossils are found by the contractor, environmental officer or other designated responsible person once excavations and other activities have commenced. Since the impact will be low, as far as the palaeontology is concerned, the project should be authorised.

# Table of Contents

Expertise of Specialist .....	1
Declaration of Independence .....	1
1. Background .....	4
2. Methods and Terms of Reference.....	8
3. Geology and Palaeontology.....	8
i. Project location and geological context .....	8
ii. Palaeontological context.....	10
4. Impact assessment.....	11
5. Assumptions and uncertainties.....	12
6. Recommendation.....	13
7. References .....	13
8. Chance Find Protocol .....	14
9. Appendix A – Examples of fossils .....	14
10. Appendix B – Details of specialist.....	15
Figure 1: Google Earth map of the general area to show the relative land marks. ....	6
Figures 2-3: Google Earth Map of the proposed development .....	6-7
Figure 4: Geological map of the area around the project site.....	8
Figure 5: SAHRIS palaeosensitivity map for the site .....	10

# 1. Background

The Msunduzi Local Municipality proposes to expand the existing Heroes' Acre Cemetery, and EnviroPro is leading the permitting process. The site is to the southwest of Pietermaritzburg and is surrounded by existing urban developments (Figures 1-3). At Heroes Acre Memorial Park, there already is a small cemetery but this needs to be expanded to cater for growing needs.

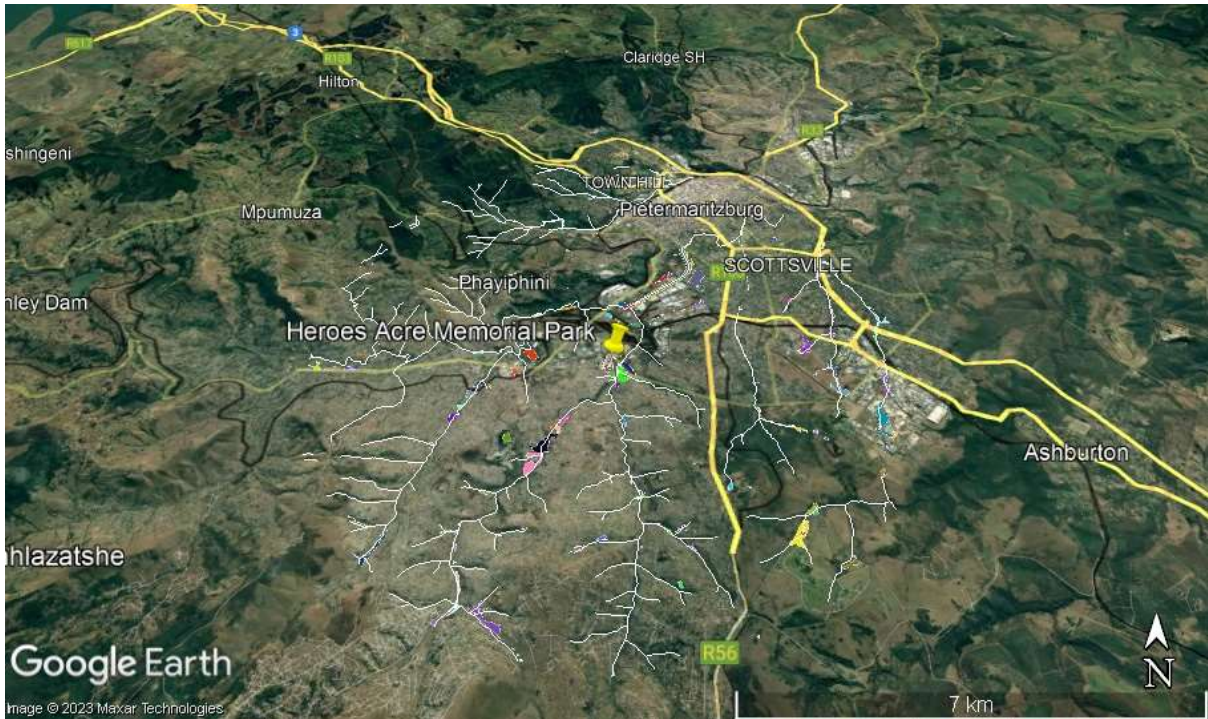
The project includes the development of ore gardens, parking area, a fire pit sitting area, museum, piazza, ablutions and storage (Figure 2).

A Palaeontological Impact Assessment was requested for the Heroes Acre Cemetery project. To comply with the regulations of the South African Heritage Resources Agency (SAHRA) in terms of Section 38(8) of the National Heritage Resources Act, 1999 (Act No. 25 of 1999) (NHRA), a desktop Palaeontological Impact Assessment (PIA) was completed for the proposed development and is reported herein.

Table 1: National Environmental Management Act, 1998 (Act No. 107 of 1998) (NEMA) and Environmental Impact Assessment (EIA) Regulations, 2014 (as amended) - Requirements for Specialist Reports (Appendix 6).

	<b>A specialist report prepared in terms of the Environmental Impact Regulations of 2017 must contain:</b>	<b>Relevant section in report</b>
ai	Details of the specialist who prepared the report,	Appendix B
aii	The expertise of that person to compile a specialist report including a curriculum vitae	Appendix B
b	A declaration that the person is independent in a form as may be specified by the competent authority	Page 1
c	An indication of the scope of, and the purpose for which, the report was prepared	Section 1
ci	An indication of the quality and age of the base data used for the specialist report: SAHRIS palaeosensitivity map accessed – date of this report	Yes
cii	A description of existing impacts on the site, cumulative impacts of the proposed development and levels of acceptable change	Section 5
d	The date and season of the site investigation and the relevance of the season to the outcome of the assessment	N/A
e	A description of the methodology adopted in preparing the report or carrying out the specialised process	Section 2
f	The specific identified sensitivity of the site related to the activity and its associated structures and infrastructure	Section 4
g	An identification of any areas to be avoided, including buffers	N/A

	<b>A specialist report prepared in terms of the Environmental Impact Regulations of 2017 must contain:</b>	<b>Relevant section in report</b>
h	A map superimposing the activity including the associated structures and infrastructure on the environmental sensitivities of the site including areas to be avoided, including buffers;	N/A
i	A description of any assumptions made and any uncertainties or gaps in knowledge;	Section 5
j	A description of the findings and potential implications of such findings on the impact of the proposed activity, including identified alternatives, on the environment	Section 4
k	Any mitigation measures for inclusion in the EMPr	Section 8, Appendix A
l	Any conditions for inclusion in the environmental authorisation	N/A
m	Any monitoring requirements for inclusion in the EMPr or environmental authorisation	Section 8, Appendix A
ni	A reasoned opinion as to whether the proposed activity or portions thereof should be authorised	Section 6
nii	If the opinion is that the proposed activity or portions thereof should be authorised, any avoidance, management and mitigation measures that should be included in the EMPr, and where applicable, the closure plan	Sections 6, 8
o	A description of any consultation process that was undertaken during the course of carrying out the study	N/A
p	A summary and copies of any comments that were received during any consultation process	N/A
q	Any other information requested by the competent authority.	N/A
2	Where a government notice gazetted by the Minister provides for any protocol or minimum information requirement to be applied to a specialist report, the requirements as indicated in such notice will apply.	N/A



**Figure 1: Google Earth map of the general area to show the relative landmarks. The Heroes Acre Memorial Park is shown by the yellow pin.**



**Figure 2: Google Earth Map of the proposed extension of the Cemetery at Heroes Acre Memorial Park with the sections as indicated in the legend. Map supplied by EnviroPro.**



**Figure 3: Masterplan for the Heroes Acre Memorial Park upgrade.**



## 2. Methods and Terms of Reference

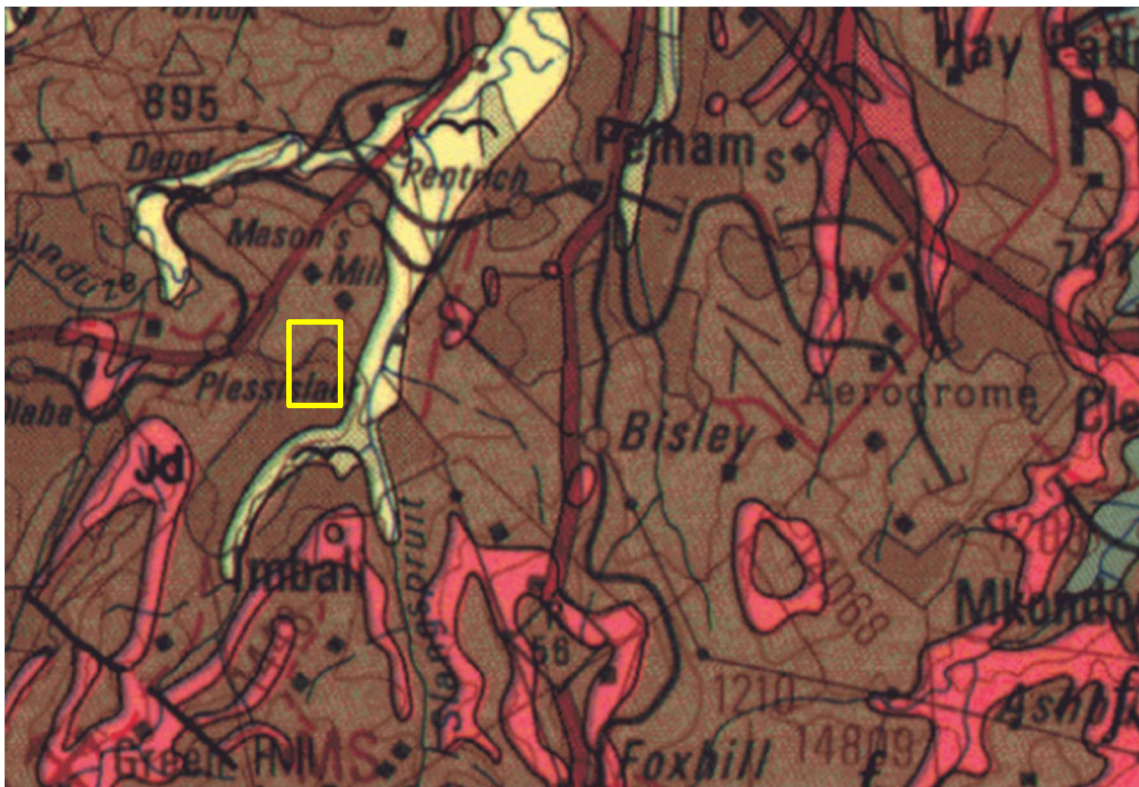
The Terms of Reference (ToR) for this study were to undertake a PIA and provide feasible management measures to comply with the requirements of SAHRA.

The methods employed to address the ToR included:

1. Consultation of geological maps, literature, palaeontological databases, published and unpublished records to determine the likelihood of fossils occurring in the affected areas. Sources included records housed at the Evolutionary Studies Institute at the University of the Witwatersrand and SAHRA databases;
2. Where necessary, site visits by a qualified palaeontologist to locate any fossils and assess their importance (*not applicable to this assessment*);
3. Where appropriate, collection of unique or rare fossils with the necessary permits for storage and curation at an appropriate facility (*not applicable to this assessment*); and
4. Determination of fossils' representivity or scientific importance to decide if the fossils can be destroyed or a representative sample collected (*not applicable to this assessment*).

## 3. Geology and Palaeontology

### i. Project location and geological context



**Figure 4: Geological map of the area around the Heroes Acre Memorial Park indicated within the yellow rectangle. Abbreviations of the rock types are explained in Table 2. Map enlarged from the Geological Survey 1: 250 000 map 2930 Durban.**

Table 2: Explanation of symbols for the geological map and approximate ages (Eriksson et al., 2006. Johnson et al., 2006; Partridge et al., 2006). SG = Supergroup; Fm = Formation; Ma = million years; grey shading = formations impacted by the project.

Symbol	Group/Formation	Lithology	Approximate Age
Q	Quaternary	Alluvium, sand, calcrete	Quaternary Ca 1.0 Ma to present
Jd	Jurassic dykes	Dolerite dykes, intrusive	Jurassic, approx. 183 Ma
Pp	Pietermaritzburg Fm, Ecca Group, Karoo SG	Shale, siltstone, mudstone	Middle Permian ca 269 – 266 Ma
C-Pd	Mbizane Fm, Dwyka Group, Karoo SG	Tillites, diamictites, sandstone, mudstone, shale	Early Permian, ca 298 - 290 Ma

The project lies in the eastern part of the main Karoo Basin where the basal Karoo Supergroup sediment unconformably lie of the older Natal group rocks. Much younger sands and alluvium have been deposited in the valleys (Figure 4).

The Karoo Supergroup rocks cover a very large proportion of South Africa and extend from the northeast (east of Pretoria) to the southwest and across to almost the KwaZulu Natal south coast. It is bounded along the southern margin by the Cape Fold Belt and along the northern margin by the much older Transvaal Supergroup rocks. Representing some 120 million years (300 – 183Ma), the Karoo Supergroup rocks have preserved a diversity of fossil plants, insects, vertebrates and invertebrates.

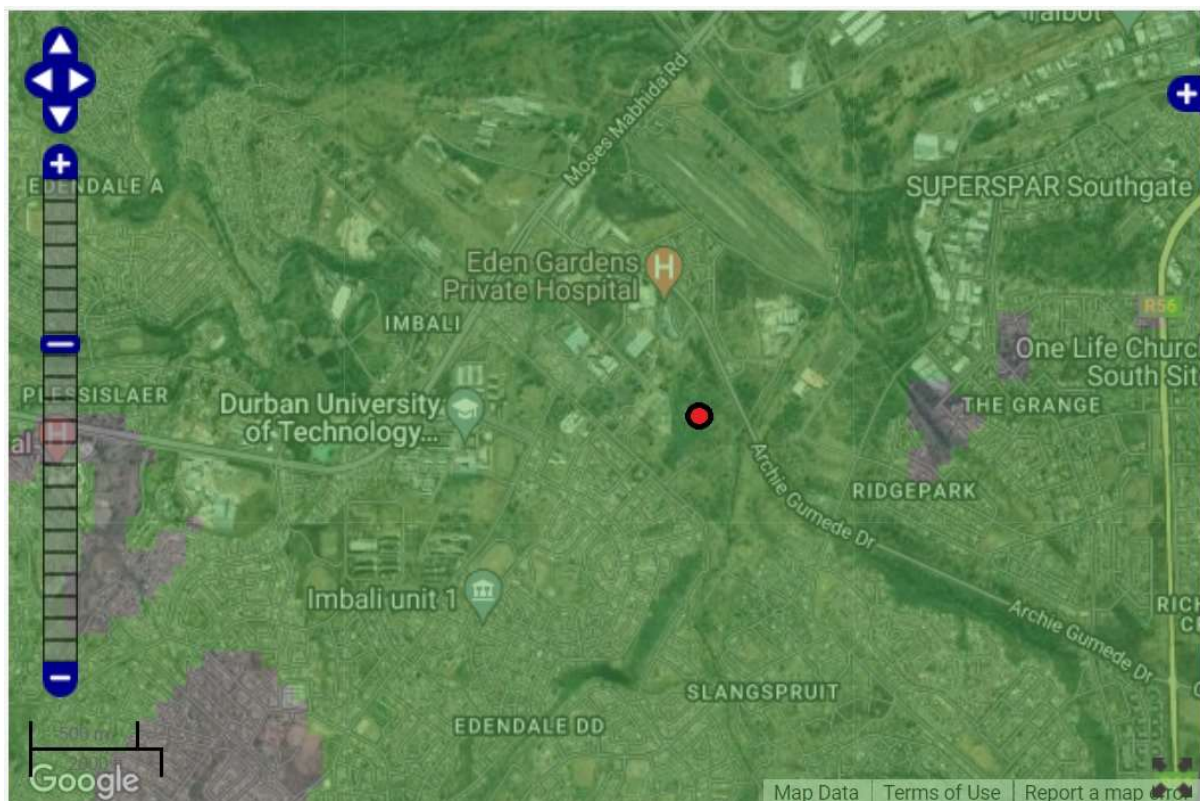
During the Carboniferous Period South Africa was part of the huge continental landmass known as Gondwanaland and it was positioned over the South Pole. As a result, there were several ice sheets that formed and melted, and covered most of South Africa (Visser, 1986, 1989; Isbell et al., 2012). Gradual melting of the ice as the continental mass moved northwards and the earth warmed, formed fine-grained sediments in the large inland sea. These are the oldest rocks in the system and are exposed around the outer part of the ancient Karoo Basin, and are known as the Dwyka Group. They comprise tillites, diamictites, mudstones, siltstones and sandstones that were deposited as the basin filled. This group has been divided into two formations with Elandsvlei Formation occurring throughout the basin and the upper Mbizane Formation occurring only in the Free State and KwaZulu Natal (Johnson et al., 2006).

Overlying the Dwyka Group rocks are rocks of the Ecca Group that are Early Permian in age. There are eleven formations recognised in this group but they do not all extend throughout the Karoo Basin. In the central and eastern part are the following formations, from base upwards: Pietermaritzburg, Vryheid and Volksrust Formations. All of these sediments have varying proportions of sandstones, mudstones, shales and siltstones and represent shallow to deep water settings, deltas, rivers, streams and overbank depositional environments.

Large exposures of Jurassic dolerite dykes occur throughout the area. These intruded through the Karoo sediments around 183 million years ago at about the same time as the Drakensberg basaltic eruption.

## ii. Palaeontological context

The palaeontological sensitivity of the area under consideration is presented in Figure 5. The site for development is in the Pietermaritzburg Formation that is indicated as moderately sensitive (green).



**Figure 3: SAHRIS palaeosensitivity map for the site for the proposed Heroes Acre Cemetery shown by the red dot. Background colours indicate the following degrees of sensitivity: red = very highly sensitive; orange/yellow = high; green = moderate; blue = low; grey = insignificant/zero.**

The basal **Pietermaritzburg Formation** (Ecca Group) is composed of dark silty mudrock that coarsens upwards with bioturbated and deformed sandy and silty beds at the top of the sequence (Johnson et al., 2006). This formation represents a major post-glacial transgression where carbonate concretions have formed sub-aqueously along an unstable shelf. The upper coarser sediments represent a prograding shoreline (Johnson et al., 2006). Trace fossils of invertebrates are present in the upper sediments along the ancient shorelines.

The formation extends over most of the KwaZulu-Natal Province but the description is based mainly on borehole records because due to its lithology and the local climate, it is usually poorly exposed (Bordy et al., 2017). The Pietermaritzburg Formation only has scattered, fragmentary plant fossil leaves (*Glossopteris*) and invertebrate trace fossils that are diagnostic of marine conditions (e.g. *Helminthopsis*). Using the sedimentary facies as well as the trace fossil assemblages, Bordy et al. (2017) have interpreted the unit as having been deposited under low energy conditions on a northerly shallowing marine shelf that initially experienced deepening waters and then shallowing in the middle Permian. Other trace fossils include *Skolithos* and bioturbation by invertebrates.

#### 4. Impact assessment

An assessment of the potential impacts to possible palaeontological resources considers the criteria encapsulated in Table 3:

**Table 3a: Criteria for assessing impacts**

<b>PART A: DEFINITION AND CRITERIA</b>		
<b>Criteria for ranking of the SEVERITY/NATURE of environmental impacts</b>	<b>H</b>	Substantial deterioration (death, illness or injury). Recommended level will often be violated. Vigorous community action.
	<b>M</b>	Moderate/ measurable deterioration (discomfort). Recommended level will occasionally be violated. Widespread complaints.
	<b>L</b>	Minor deterioration (nuisance or minor deterioration). Change not measurable/ will remain in the current range. Recommended level will never be violated. Sporadic complaints.
	<b>L+</b>	Minor improvement. Change not measurable/ will remain in the current range. Recommended level will never be violated. Sporadic complaints.
	<b>M+</b>	Moderate improvement. Will be within or better than the recommended level. No observed reaction.
	<b>H+</b>	Substantial improvement. Will be within or better than the recommended level. Favourable publicity.
<b>Criteria for ranking the DURATION of impacts</b>	<b>L</b>	Quickly reversible. Less than the project life. Short term
	<b>M</b>	Reversible over time. Life of the project. Medium term
	<b>H</b>	Permanent. Beyond closure. Long term.
<b>Criteria for ranking the SPATIAL SCALE of impacts</b>	<b>L</b>	Localised - Within the site boundary.
	<b>M</b>	Fairly widespread - Beyond the site boundary. Local
	<b>H</b>	Widespread - Far beyond site boundary. Regional/ national
<b>PROBABILITY (of exposure to impacts)</b>	<b>H</b>	Definite/ Continuous
	<b>M</b>	Possible/ frequent
	<b>L</b>	Unlikely/ seldom

**Table 3b: Impact Assessment**

<b>PART B: Assessment</b>		
<b>SEVERITY/NATURE</b>	<b>H</b>	-
	<b>M</b>	-
	<b>L</b>	Soils and sands do not preserve fossils; so far there are no records from the Pietermaritzburg Fm of plant or animal fossils in this region so it is very unlikely that fossils occur on the site. The impact would be negligible
	<b>L+</b>	-
	<b>M+</b>	-
	<b>H+</b>	-
	<b>DURATION</b>	<b>L</b>
<b>M</b>		-
<b>H</b>		Where manifest, the impact will be permanent.
<b>SPATIAL SCALE</b>	<b>L</b>	Since the only possible fossils within the area would be fragmentary or trace fossils in the Pietermaritzburg shales, the spatial scale will be localised within the site boundary.
	<b>M</b>	-
	<b>H</b>	-
<b>PROBABILITY</b>	<b>H</b>	-
	<b>M</b>	-
	<b>L</b>	It is extremely unlikely that any fossils would be found in the loose soils and sands that cover the area or in the shales that will be excavated. Nonetheless, a Fossil Chance Find Protocol should be added to the eventual EMPr.

Based on the nature of the project, surface activities may impact upon the fossil heritage if preserved in the development footprint. The geological structures suggest that the rocks are the right age to contain fossils but from the wrong depositional environment to preserve fossils. Furthermore, the material to be excavated for infrastructure and graves is soil and this does not preserve fossils. Since there is an extremely small chance that fossils from below ground in the Pietermaritzburg Formation may be disturbed a Fossil Chance Find Protocol has been added to this report. Taking account of the defined criteria, the potential impact to fossil heritage resources is very low.

## 5. Assumptions and uncertainties

Based on the geology of the area and the palaeontological record as we know it, it can be assumed that the formation and layout of the dolomites, sandstones, shales and sands are typical for the country and only some might contain trace fossils or fossil plant, insect, invertebrate and vertebrate material. The sands of the Quaternary period would not preserve fossils. Dolerite does not preserve fossils.

## 6. Recommendation

Based on experience and the lack of any previously recorded fossils from the area, it is extremely unlikely that any fossils would be preserved in the overlying soils or sands of the Quaternary. There is a very small chance that fossils may occur in shales below ground of the early Permian Pietermaritzburg Formation so a Fossil Chance Find Protocol should be added to the EMPr. If fossils are found by the contractor, environmental officer or other responsible person once excavations for infrastructure and graves have commenced then they should be rescued and a palaeontologist called to assess and collect a representative sample. The impact on the palaeontological heritage would be low, so as far as the palaeontology is concerned, the project should be authorised.

## 7. References

Anderson, J.M., Anderson, H.M., 1985. Palaeoflora of Southern Africa: Prodrum of South African megafloras, Devonian to Lower Cretaceous. A.A. Balkema, Rotterdam. 423 pp.

Bordy, E.M., Spelman, S., Cole, D.I., Mthembi, P., 2017. Lithostratigraphy of the **Pietermaritzburg** Formation (Ecca Group, Karoo Supergroup), South Africa. South African Journal of Geology 120, 293-302.

Isbell, L.C., Gulbranson, E.L., Limarino, C.O., Fraiser, F.L., Koch, Z.J., Ciccioli, P.I., Dineen, A.A., 2012. Glacial paradoxes during the late Paleozoic ice age: Evaluating the equilibrium line altitude as a control on glaciation. Gondwana Research 22, 1-19.

Johnson, M.R., van Vuuren, C.J., Visser, J.N.J., Cole, D.I., Wickens, H.deV., Christie, A.D.M., Roberts, D.L., Brandl, G., 2006. Sedimentary rocks of the Karoo Supergroup. In: Johnson, M.R., Anhaeusser, C.R. and Thomas, R.J., (Eds). The Geology of South Africa. Geological Society of South Africa, Johannesburg / Council for Geoscience, Pretoria. Pp 461 – 499.

Partridge, T.C., Botha, G.A., Haddon, I.G., 2006. Cenozoic deposits of the interior. In: Johnson, M.R., Anhaeusser, C.R. and Thomas, R.J., (Eds). The Geology of South Africa. Geological Society of South Africa, Johannesburg / Council for Geoscience, Pretoria. Pp 585-604.

Plumstead, E.P., 1969. Three thousand million years of plant life in Africa. Geological Society of southern Africa, Annexure to Volume LXXII. 72pp + 25 plates.

Visser, J.N.J., 1986. Lateral lithofacies relationships in the glaciogene Dwyka Formation in the western and central parts of the Karoo Basin. Transactions of the Geological Society of South Africa 89, 373-383.

Visser, J.N.J., 1989. The Permo-Carboniferous Dwyka Formation of southern Africa: deposition by a predominantly subpolar marine icesheet. Palaeogeography, Palaeoclimatology, Palaeoecology 70, 377-391.

## 8. Chance Find Protocol

### **Monitoring Programme for Palaeontology – to commence once the excavation activities begin.**

1. The following procedure is only required if fossils are seen on the surface and when excavations commence.
2. When excavations begin the rocks and discard must be given a cursory inspection by the environmental officer or designated person. Any fossiliferous material (trace fossils, plants, insects, bone or coal) should be put aside in a suitably protected place. This way the project activities will not be interrupted.
3. Photographs of similar fossils must be provided to the developer to assist in recognizing the fossil plants, vertebrates, invertebrates or trace fossils in the shales and mudstones (for example see Figure 6). This information will be built into the EMP's training and awareness plan and procedures.
4. Photographs of the putative fossils can be sent to the palaeontologist for a preliminary assessment.
5. If there is any possible fossil material found by the developer/environmental officer then the qualified palaeontologist sub-contracted for this project, should visit the site to inspect the selected material and check the dumps where feasible.
6. Fossil plants or vertebrates that are considered to be of good quality or scientific interest by the palaeontologist must be removed, catalogued and housed in a suitable institution where they can be made available for further study. Before the fossils are removed from the site an AMAFA or SAHRA permit must be obtained. Annual reports must be submitted to AMAFA and SAHRA as required by the relevant permits.
7. If no good fossil material is recovered then no site inspections by the palaeontologist will be necessary. A final report by the palaeontologist must be sent to AMAFA and SAHRA once the project has been completed and only if there are fossils.
8. If no fossils are found and the excavations have finished then no further monitoring is required.

## 9. Appendix A – Examples of fossils from the Pietermaritzburg Formation.



**Figure 6: Photographs of some trace fossils made by invertebrates that could be found in the Pietermaritzburg Formation.**

## 10. Appendix B – Details of specialist

### **Curriculum vitae (short) - Marion Bamford PhD January 2023**

Present employment: Professor; Director of the Evolutionary Studies Institute.  
Member Management Committee of the NRF/DSI Centre of Excellence Palaeosciences, University of the Witwatersrand, Johannesburg, South Africa

Telephone : +27 11 717 6690  
Cell : 082 555 6937  
E-mail : [marion.bamford@wits.ac.za](mailto:marion.bamford@wits.ac.za) ;  
[marionbamford12@gmail.com](mailto:marionbamford12@gmail.com)



## ii) Academic qualifications

Tertiary Education: All at the University of the Witwatersrand:

1980-1982: BSc, majors in Botany and Microbiology. Graduated April 1983.

1983: BSc Honours, Botany and Palaeobotany. Graduated April 1984.

1984-1986: MSc in Palaeobotany. Graduated with Distinction, November 1986.

1986-1989: PhD in Palaeobotany. Graduated in June 1990.

## iii) Professional qualifications

*Wood Anatomy Training (overseas as nothing was available in South Africa):*

1994 - Service d'Anatomie des Bois, Musée Royal de l'Afrique Centrale, Tervuren, Belgium, by Roger Dechamps

1997 - Université Pierre et Marie Curie, Paris, France, by Dr Jean-Claude Koeniguer

1997 - Université Claude Bernard, Lyon, France by Prof Georges Barale, Dr Jean-Pierre Gros, and Dr Marc Philippe

## iv) Membership of professional bodies/associations

Palaeontological Society of Southern Africa

Royal Society of Southern Africa - Fellow: 2006 onwards

Academy of Sciences of South Africa - Member: Oct 2014 onwards

International Association of Wood Anatomists - First enrolled: January 1991

International Organization of Palaeobotany – 1993+

Botanical Society of South Africa

South African Committee on Stratigraphy – Biostratigraphy - 1997 - 2016

SASQUA (South African Society for Quaternary Research) – 1997+

PAGES - 2008 –onwards: South African representative

ROCEEH / WAVE – 2008+

INQUA – PALCOMM – 2011+onwards

## v) Supervision of Higher Degrees

All at Wits University

Degree	Graduated/completed	Current
Honours	13	0
Masters	13	3
PhD	13	7
Postdoctoral fellows	14	4

## vi) Undergraduate teaching

Geology II – Palaeobotany GEOL2008 – average 65 students per year

Biology III – Palaeobotany APES3029 – average 25 students per year

Honours – Evolution of Terrestrial Ecosystems; African Plio-Pleistocene Palaeoecology;

Micropalaeontology – average 12 - 20 students per year.

## vii) Editing and reviewing

Editor: *Palaeontologia africana*: 2003 to 2013; 2014 – Assistant editor

Guest Editor: *Quaternary International*: 2005 volume

Member of Board of Review: *Review of Palaeobotany and Palynology*: 2010 –

Associate Editor: *Cretaceous Research*: 2018-2020

Associate Editor: Royal Society Open: 2021 -  
Review of manuscripts for ISI-listed journals: 30 local and international journals

#### viii) **Palaeontological Impact Assessments**

25 years' experience in PIA site and desktop projects

- Selected from recent projects only – list not complete:
- Skeerpoort Farm Mast 2020 for HCAC
- Vulindlela Eco village 2020 for 1World
- KwaZamakhule Township 2020 for Kudzala
- Sunset Copper 2020 for Digby Wells
- McCarthy-Salene 2020 for Prescali
- VLNR Lodge 2020 for HCAC
- Madadeni mixed use 2020 for Enviropro
- Frankfort-Windfield Eskom Powerline 2020 for 1World
- Beaufort West PV Facility 2021 for ACO Associates
- Copper Sunset MR 2021 for Digby Wells
- Sannaspos PV facility 2021 for CTS Heritage
- Smithfield-Rouxville-Zastron PL 2021 for TheroServe
- Glosam Mine 2022 for AHSA
- Wolf-Skilpad-Grassridge OHPL 2022 for Zutari
- Iziduli and Msenge WEFs 2022 for CTS Heritage
- Hendrina North and South WEFs & SEFs 2022 for Cabanga
- Dealesville-Springhaas SEFs 2022 for GIBB Environmental
- Vhuvhili and Mukondelei SEFs 2022 for CSIR
- Chemwes & Stilfontein SEFs 2022 for CTS Heritage
- Equestria Exts housing 2022 for Beyond Heritage
- Zeerust Salene boreholes 2022 for Prescali
- Tsakane Sewer upgrade 2022 for Tsimba
- Transnet MPP inland and coastal 2022 for ENVASS
- Ruighoek PRA 2022 for SLR Consulting (Africa)
- Namli MRA Steinkopf 2022 for Beyond Heritage

#### ix) **Research Output**

Publications by M K Bamford up to January 2022 peer-reviewed journals or scholarly books: over 170 articles published; 5 submitted/in press; 14 book chapters.

Scopus h-index = 30; Google Scholar h-index = 39; i10-index = 116 based on 6568 citations.

Conferences: numerous presentations at local and international conferences.